

AC128-01 timer remote with touch screen user manual v1.2



AC128-01
Intelligent timer remote control with touch screen

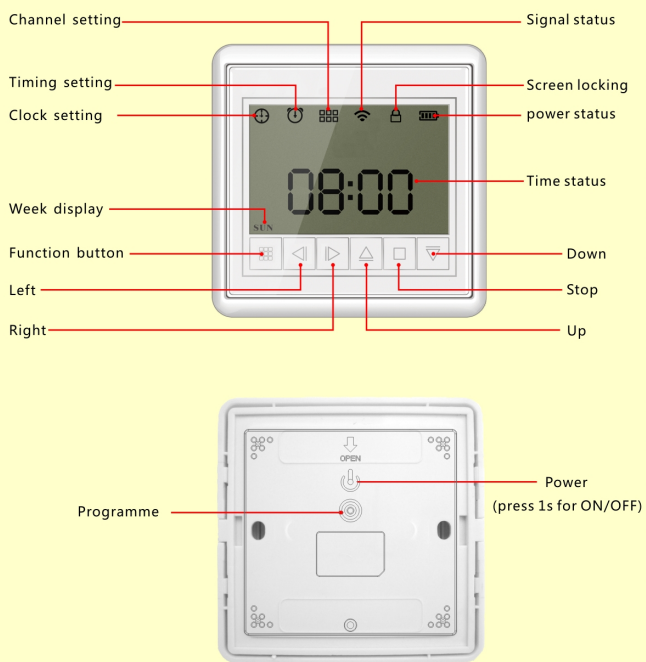
I. Features

- With capacitive touch button, high reliability and anti-interference
- With timing function, max 6 timing points, daily and weekly for recycle
- 16 channels, it can achieve the receiver single and group control
- Extra 3 group control for optional, any channels from that 16 ones
- LCD display, fancy and simple
- Magnetic holder, easy and flexible installation

II. Parameters

Model	Power supply	Working temperature	Power	RF frequency	Channel quantity	Operation mode
AC128-01	CR2032(3V)	-20°C~+55°C	< 10mW	433.92MHz	16 channels	By touch

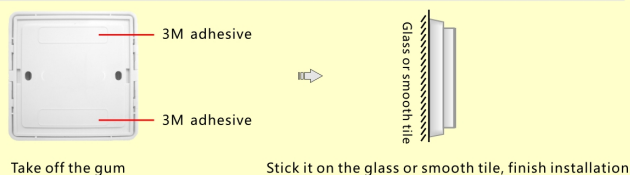
III. Button functions



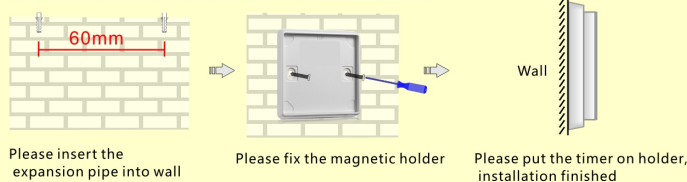
AC128-01 Screen Display Functions

IV. Installation

Installation with adhesive--available for glasses and smooth tile

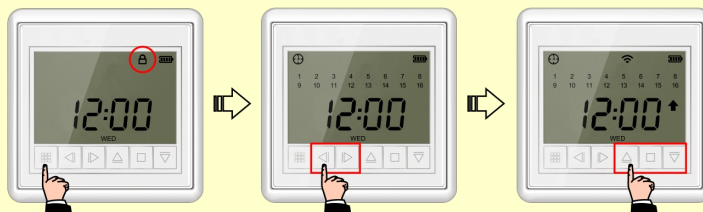


Installation with screw--available for wall



V. Operation instructions

(During the operation, timer will lock the screen if there is no further operation within 30s)

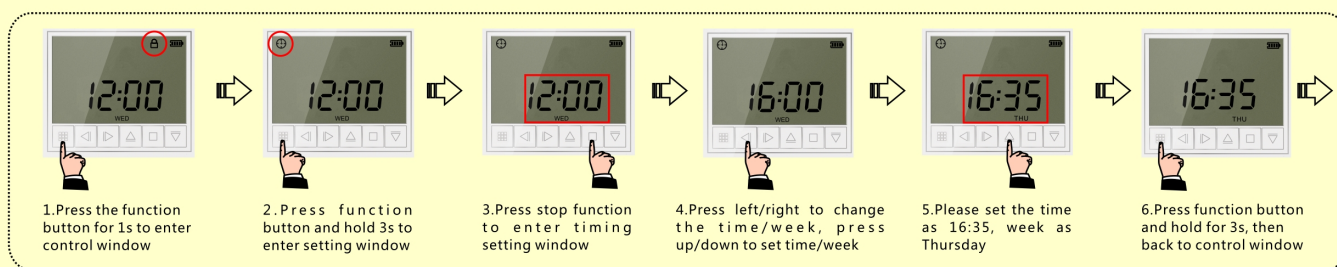


1. Press function button for 1s to enter control window
2. Press left/right to select channel
3. Press Up, Stop, Down to achieve Up, Stop, Down function

VI. Setting instructions

(During the operation, timer will lock the screen if there is no further operation within 30s)

A. Timing and week setting (24-hour) (For example, you need to set Thursday, 16:35, please follow below operations)



B. Timing setting(max 6 time point)

Please program each of the 1-16 channels to 16 blinds(please refer the program details on receiver user manual)

For example, you need to set the 2nd time point as: the 1st, 6th, 8th, 12th, 16th, blind need to open at 8:30 on every Monday to Friday, please follow below operations:

Enter timing window

1. Press the function button for 1s to enter control window

2. Press function button and hold 3s to enter setting window

3. Press right to change to timing setting

4. Press stop enter timing setting window

To set the time point you want(total 6 points)

5. Press up/down to change the time point number and choose number 2

6. Press right to ON/OFF

Choose channels (total 16 channels)

7. Press up/down to set the time point as ON

8. Press right to channel setting

9. Press up/down to change channel

10. To set channel as 1st, 6th, 8th, 12th, 16th

To set the working time

11. Press right to timing setting

12. Press up/down to set time as 8:30

To set the transmission status as Up/Down

13. Press right to up/down setting

14. Press up/down to set it as Up

To set the the transmission day in weekly

15. Press right to week setting

16. Press up/down to change weekly day, press stop to add/delete weekly day

17. To set the weekly day from Monday to Friday

18. Press and hold the function button for 3s to save and exit from the window

C. Adding new group(max add 3 new group)

For example, to add new group control 3, and to build a new manual closing group with above 1st, 6th, 8th, 12th, 16th, blind.

Manual for adding new group

16 channels are defaulted

Extra 3 new group control can be added, each new group control is consisting of any channel from that 16 channels

1. Press function button for 1s to enter setting window

2. Press and hold function button to enter main setting window

3. Press right to timing setting

4. Press right to group setting

5. Press stop to enter group setting window

6. Press up/down and choose group 3

7. Press right to ON/OFF, press up/down to ON/OFF

8. To set the status of group control as ON

9. Press right to channel setting, press up/down to choose channel

10. Press stop to save/delete channel

11. To set the channel as 1st, 6th, 8th, 12th, 16th

12. Press and hold function button for 3s to save and back to control window

13. Press left/right to change channel and group, and choose group 3

14. Press down to achieve all the 5 blinds closing in group 3

VII. Troubles and shootings

Trouble	Reasons	Solution
The display is not completed show and not clear	Please check the power display	Please change battery
Poor remote sensitivity	Please check the installation ambient if there is metal things	Please change the installation position
No respond after pressing button	1. Screen is locked 2. Please touch it in correct area	1. Please press function button 1s to unlock the screen 2. Please touch it in correct area